

# The Spanish Travelers Project

*Letters from Spain in a space/time box:  
understanding the chronotopes of 19th-century  
travel and travelogues through 3D literary  
mapping and Historical GIS*

Eugenia Afinoguénova  
Stephen Appel  
Andrea Ballard  
Chris Larkee  
Makenzi McGowan

[www.spanishtravelers.com](http://www.spanishtravelers.com)



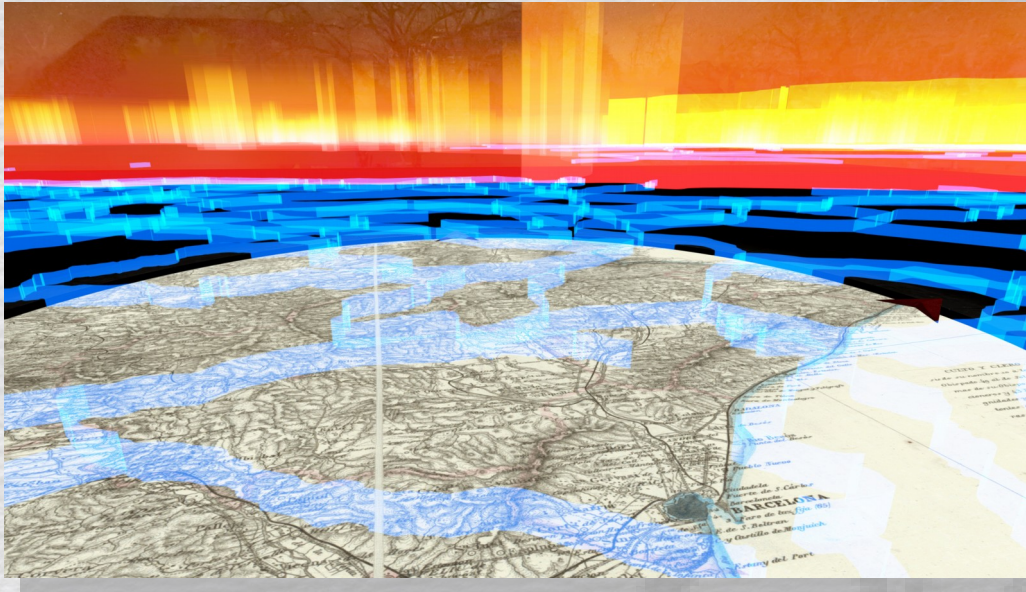
Dept. of  
Languages  
Literatures and  
Cultures

MARVL – Marquette  
Viz Lab



American  
Geographical  
Society Library

# Project Overview

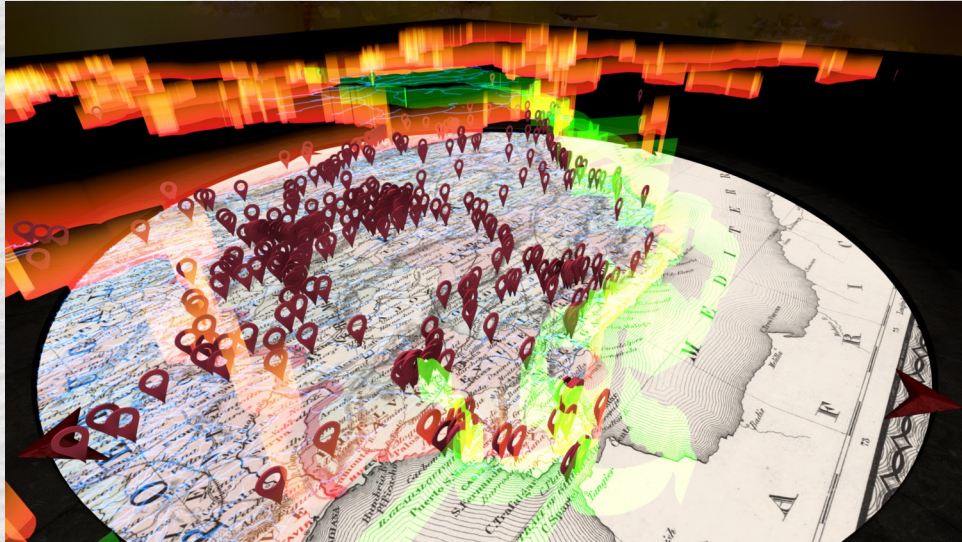


- 19<sup>th</sup>-century travel writing in Spain
- Historical Gazetteer
- Mapping in GIS
- Georeferenced Historical maps
- 3D Visualization of time-space intersections
- Gender, Nationality, Language, means of mobility
- Uncertainty, Time

# Research Questions

- Is there any correlation between the means of mobility—horses, donkeys, shared horse-driven carriages, walking, trains, sailboats, and steamers—available to 19th century travelers, on the one hand, and the repertory of destinations that they visited?
- How did different types of mobility affect, not only the timelines of travels, but also the ways in which these timelines were narrated in travel literature?
- How, if at all, did the gender and the country of origin of the writers and the travelers affect the timelines and the destinations of their travels and the ways in which these were described?

# Chronotopes and Space-Time Cubes



- The interdependence of all formal elements related to narrative time and space (Bakhtin, 1975)
  - Similar to time-space, but for language
- Time geography (Hägerstrand, 1973)
- Kwan's feminist geovisualizations of women in the urban environment
- Use of 3D modeling and animation

# Corpus

- 19th-century travel and travelogues
- Over 100 digitized texts in Spanish, English, French, German, and Russian by male and female authors
- Three Factors for approaching travel literature:
  - Conflation of travel and fiction writing
  - Plagiarism before plagiarism
  - Indistinction between travel and history accounts

## TOUR OF A FAMILY

ROUND THE

COASTS OF SPAIN AND PORTUGAL.



### CHAPTER I.

HAVING determined to spend the winter in the south of Europe, after many interesting debates and conversations we decided that the south of Spain should be our destination. . We had previously spent several winters at Nice and its neighbourhood, and we saw by the railway guides that it was now as easy to reach Barcelona by Perpignan as to go to Nice by Toulon.

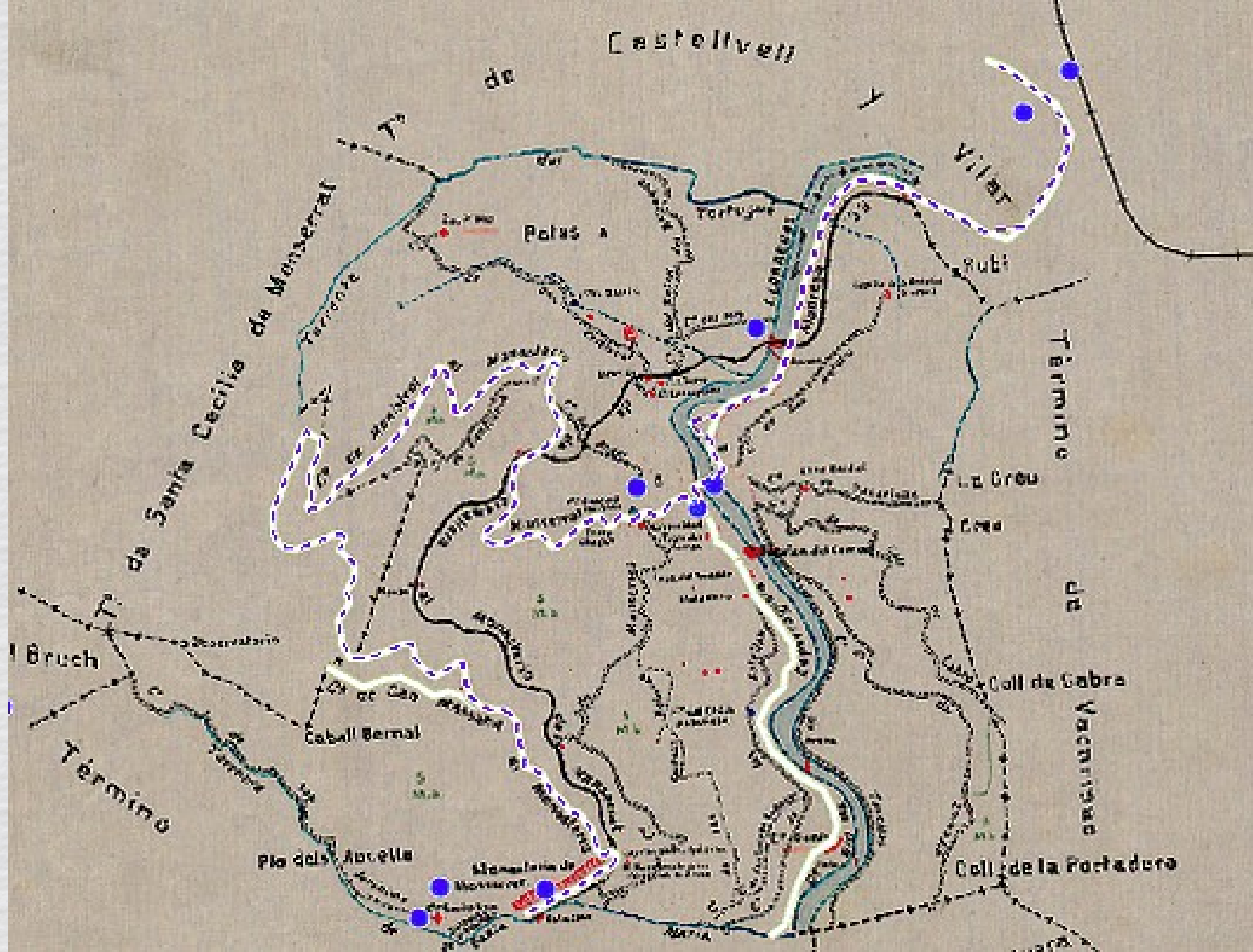
We tried that all-powerful medium, an advertisement in the *Times*, for a servant who

# Gazetteer

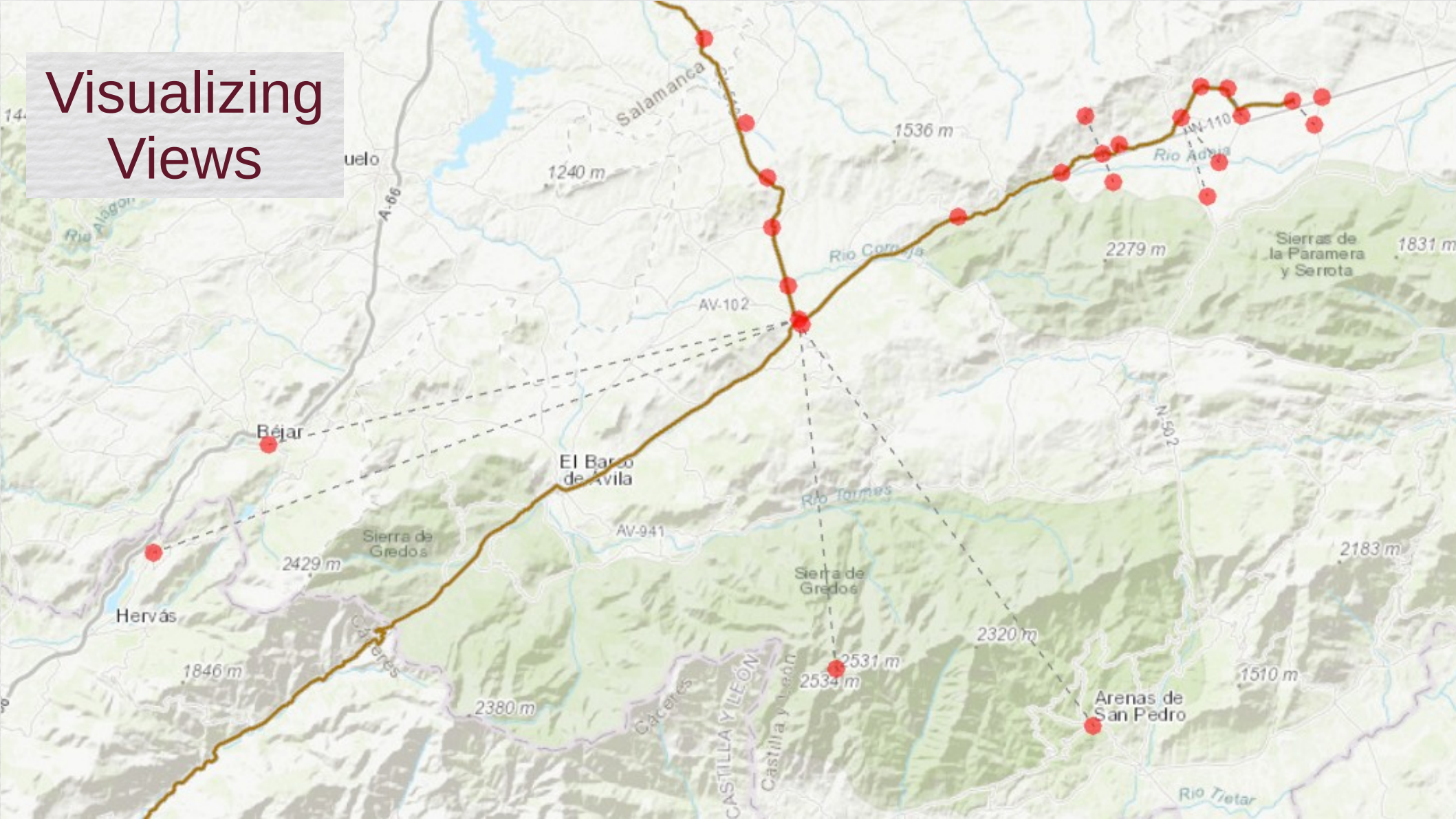
- Name in the literature, English name, Local name
- Use Geonames ID, contribute when needed
- Destination ID identifies book as well as destinations
- Parent-child relationships for multiple locations in one city

Unique_ID	Name_in_lit	English_Name	Local_Name	Destination_Geoname	Destination_ID	City_Region_Geoname	City_ID	Latitude	Longitude	Notes
2	Alexandria	Alexandria	Alejadria/ الإسكندرية (al-'i	Alexandria	361058	Alexandria, Egypt	361059	31.201760	29.915820	
4	Elvas	Elvas	Elvas	Elvas	2268615	Elvas, Portugal	2268615	38.881500	-7.162820	
5	Evora	Évora	Évora	Évora	2268406	Évora, Portugal	2268406	38.566670	-7.900000	
6	Belem	Belém	Belém	Belém	2270978	Belém, Portugal	2270978	38.698750	-9.192890	
7	Gibraltar	Gibraltar	Gibraltar	Gibraltar	2411586	Gibraltar	2411586	36.133330	-5.350000	
8	Bay of Gibraltar	Bay of Gibraltar	Bahía de Gibraltar			Gibraltar	2411586	36.155660	-5.366265	Bay
9	St. George's chamber	St. George's chamber	St. George's Hall			Gibraltar	2411586	36.145125	-5.353179	"St. George's Hall" Inside the Great Siege Tunnels--- CHAMB
11	Moorish tower	Moorish Tower	Moorish Tower/Tower of	Moorish Castle	6693878	Gibraltar	2411586	36.143970	-5.349900	Tower of Homage refers to the tower which is part of the M
12	Club House Hotel	Club House Hotel	Club House Hotel			Gibraltar	2411586	36.140967	-5.354098	
13	Gibraltar port	Gibraltar Port	Port of Gibraltar			Gibraltar	2411586	36.149042	-5.358067	Port of departure for current ferries
14	The Alameda	The Alameda	La Alameda	Alameda Gardens	2411648	Gibraltar	2411586	36.130840	-5.350940	
15	Church of the Sacred He	Church of the Sacred Heart	Church of the Sacred Hear	Church of the Sacred Hea	2411474	Gibraltar	2411586	36.139140	-5.350660	
16	Europa Point	Europa Point	Europa Point	Europa Point	2411540	Gibraltar	2411586	36.109540	-5.344700	
17	Trafalgar Cemetery	Trafalgar Cemetery	Trafalgar Cemetery	Trafalgar Cemetery	2411444	Gibraltar	2411586	36.134760	-5.352400	
18	Royal Hotel	Royal Hotel	Royal Hotel			Gibraltar	2411586	36.140813	-5.353524	
19	Wheatley Terrace aka S	Wheatley Terrace/ Scud Hil	Wheatley Terrace/ Scud H			Gibraltar	2411586	36.126385	-5.352957	Area
20	Waterport Street	Waterport Street	Waterport Street			Gibraltar	2411586	36.141100	-5.353536	Now Main St.
22	Alzira	Alzira	Alzira	Alzira	2522129	Alzira	2522129	39.150000	-0.433330	
23	Requena	Requena	Requena	Requena	2511930	Requena	2511930	39.488340	-1.100440	
24	Valencia	Valencia	València	Valencia	2509954	Valencia	2509954	39.469750	-0.377390	

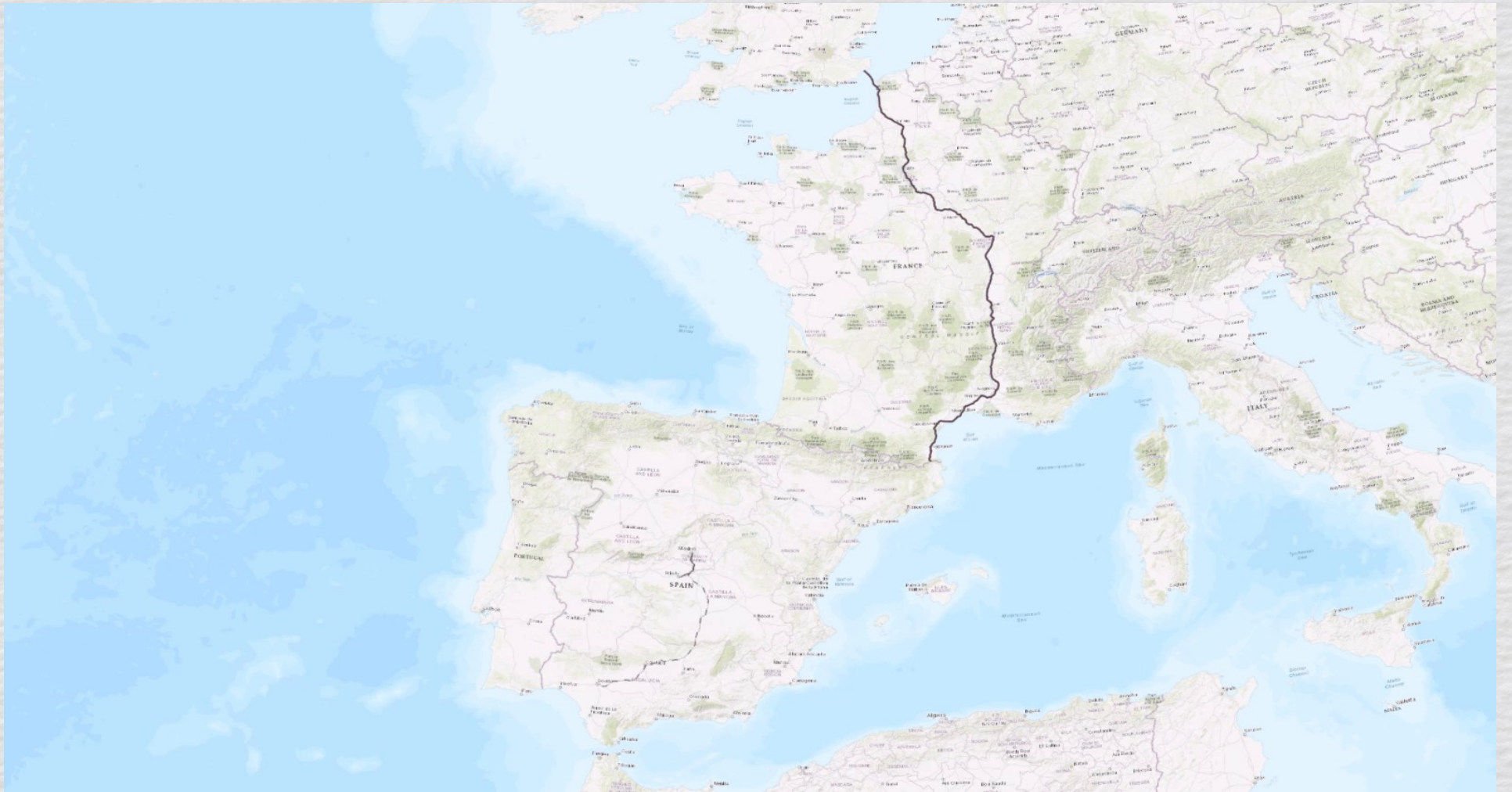
Using Historical Maps to determine routes and fill in gaps in our understanding of the route



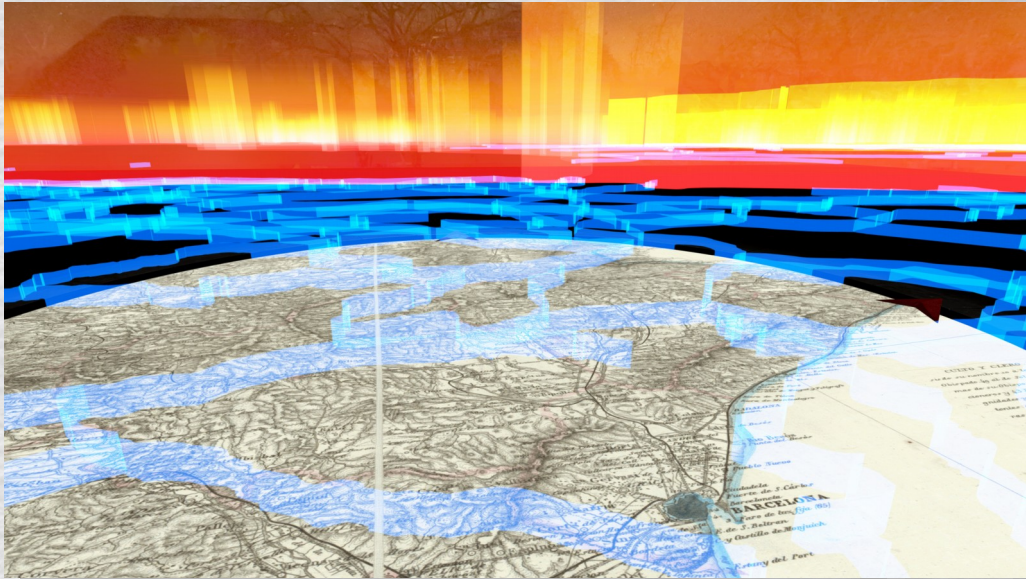
# Visualizing Views







# Thank you!



- Visit our website:  
[www.spanishtravelers.com](http://www.spanishtravelers.com)
- Contact Eugenia Afinoguénova at Marquette University with non-GIS questions
- See also: Prado VR  
[prado.nfshost.com](http://prado.nfshost.com)
- Interested in data mining?